



LEEDS CITY REGION
ENTERPRISE
PARTNERSHIP

SUPPORTING SME RESOURCE EFFICIENCY

VINCENT MCCABE
PROGRAMME MANAGER
(RESOURCE EFFICIENCY)



European Union

European Regional
Development Fund

Part-funded by the England European Regional
Development Fund as part of the European
Structural and Investment Funds Growth
Programme 2014-2020.



CONTENTS

- Brief Introduction to the LEP
- Overview of LEP Support
- The Resource Efficiency Fund
 - The Offer
 - Eligibility
 - The Process
 - Examples



TO BE A GLOBALLY RECOGNISED ECONOMY WHERE GOOD
GROWTH DELIVERS HIGH LEVELS OF PROSPERITY, JOBS
AND QUALITY OF LIFE FOR EVERYONE

OUR TRANSFORMATIVE VISION FOR LEEDS CITY REGION

STRATEGIC ECONOMIC PLAN

FOUR INTER-CONNECTED PRIORITIES:



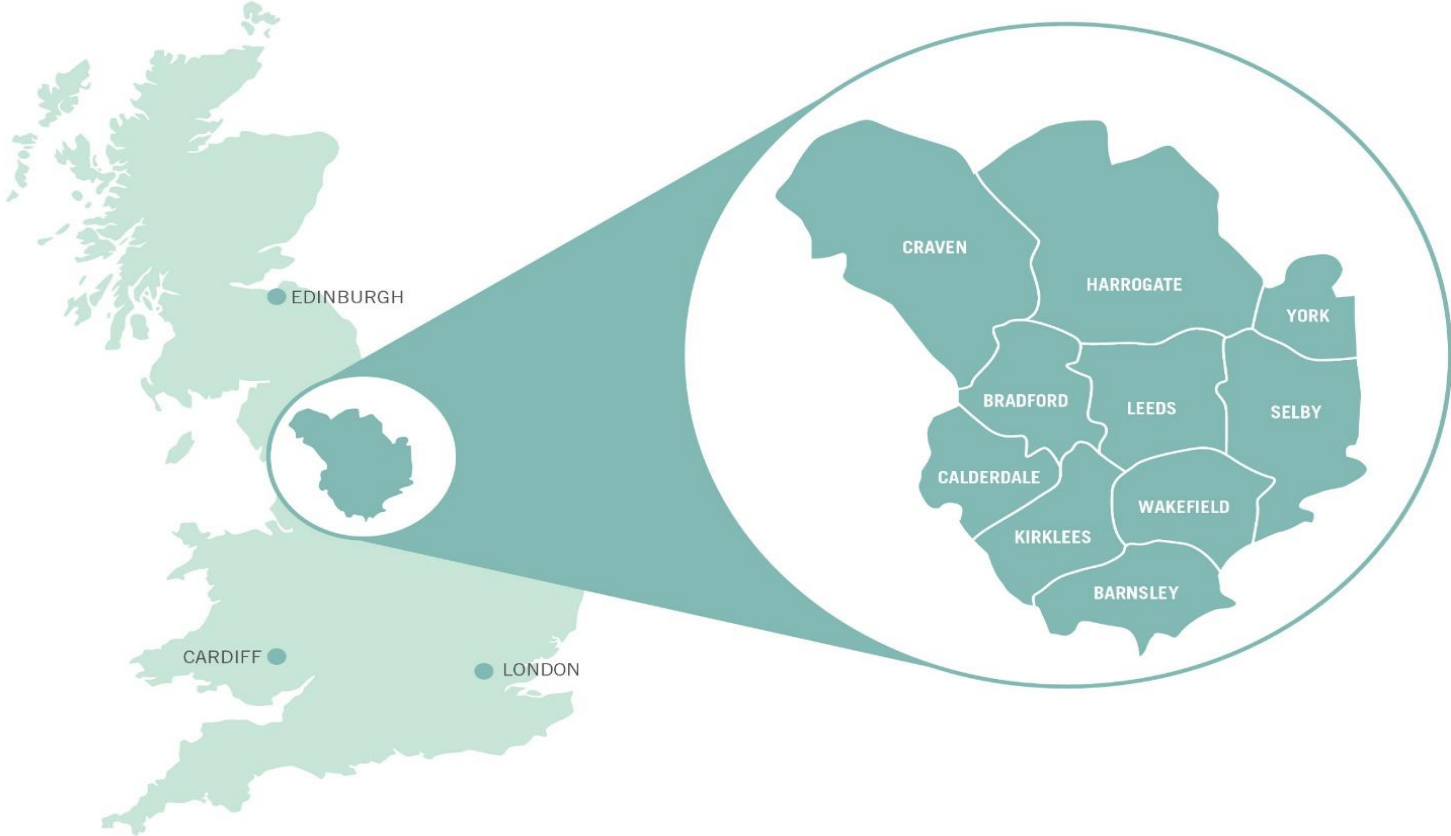
PROMOTING GOOD GROWTH:



GOOD GROWTH

OUR GEOGRAPHY

LEEDS CITY REGION: HEART OF THE NATION



LEP SME SUPPORT OFFER

AVAILABLE NOW:

Capital grants £10-250k, **capital loans** £0.5-1.0m, Finpoint, Market Invoice



Skills Service: skills diagnostics, training advice, and apprenticeship hubs and support

Growth Service: intensive support for growth SMEs



AD:Venture for pre-starts & start-ups: capital grants and business support

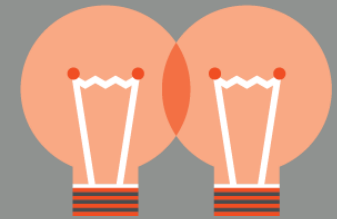


Travel Plan Network: travel advice & support, discounted corporate MCards



Digital Enterprise: digital technology grants and business support

Resource Efficiency Fund: Free assessments and grants



COMING SOON:

Access Innovation: support for new and innovative products and processes

Strategic Business Growth: advisory and financial support for growth SMEs

THE RESOURCE EFFICIENCY FUND

An ERDF funded business support product to assist Leeds City Region SMEs to identify, fund and implement capital resource efficiency improvements to:

- Save costs (& carbon)
- Become more resilient to future price increases
- Improve their business credentials

LEP LEEDS CITY REGION ENTERPRISE PARTNERSHIP European Union European Regional Development Fund

on off

IS YOUR BUSINESS LOOKING TO BECOME MORE RESOURCE EFFICIENT?
#BUSINESSSUPPORT

CO₂

LEP LEEDS CITY REGION ENTERPRISE PARTNERSHIP European Union European Regional Development Fund

OUR RESOURCE EFFICIENCY FUND CAN PROVIDE ADVICE AND FINANCIAL SUPPORT
#RESOURCESMARTBIZ

THE OFFER

- **Free independent assessment** worth up to £1100 to assess equipment, premises, processes and performance to find opportunities for improvements in energy / resource usage.
- Potential access to **50% capital grant funding** (min grant £1k / max £10k) – limited availability.
- **Wrap around support** tailored to the individual business' needs.



LEPS LEEDS CITY REGION
ENTERPRISE
PARTNERSHIP

European Union
European Regional
Development Fund

£10K

OUR NEW #BIZSUPPORT HAS
FREE EFFICIENCY AUDITS &
GRANT FUNDING UP TO £10K
#RESOURCESMARTBIZ

WHO IS IT FOR?

Businesses:

- Based in the Kirklees, Calderdale, Wakefield, Leeds, Bradford, Selby, Craven, York or Harrogate
- Employing fewer than 250 employees
- Having a turnover of less than the equivalent of € 50 million per annum or an annual balance sheet of less than € 43 million
- Primarily serving other businesses i.e. minimal B2C activities.
- Able to provide 12 months consumption data (this usually excludes new start-ups)
- Not having received > €200,000 De Minimis Aid in last 3 years

Primary target businesses are those with high resource usage e.g. medium sized manufacturing sector.

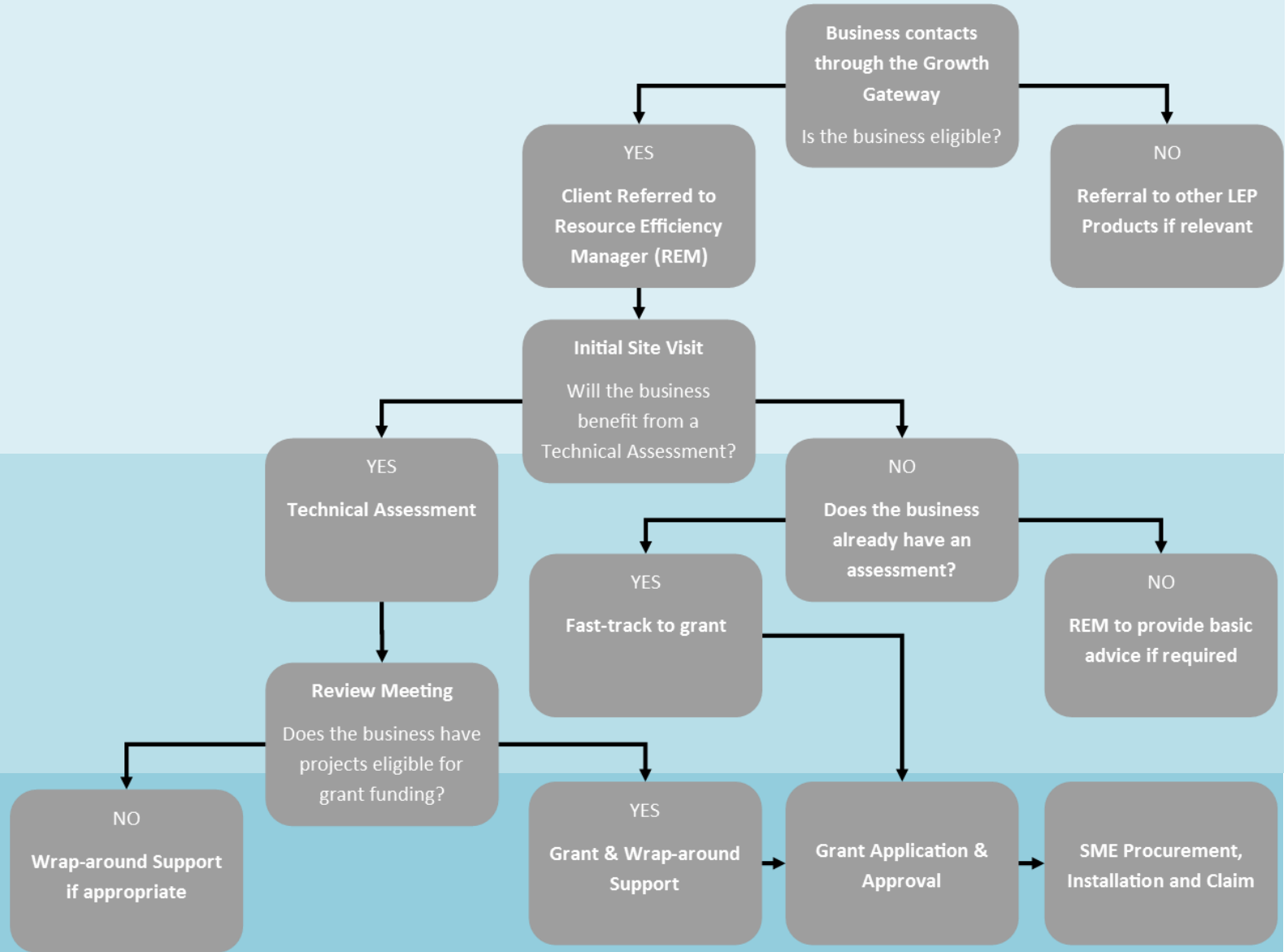
Ineligible industries and activities include retail, banking and insurance, agriculture/fisheries and road freight transport.

THE PROCESS

STAGE 1

STAGE 2

STAGE 3



ASSESSMENT OUTPUTS

Detailed Resource Efficiency Audit

Energy

Rank	Recommendation & Description	Potential Annual Savings TCO2 & kWh (pa)	Estimated Capital Cost £	Estimated Savings £ (pa)	Estimated Payback Period (Years)	Potential Funding Sources
1	<p>The current extraction system for the oven is not operable. Therefore the pedestrian access door must be kept open to allow steam/warm air to escape the premises (otherwise condensation is forming and dripping from the roof). This means that in colder weather the gas heater is on a lot of the time for staff thermal comfort.</p> <p>Replacing the extraction system would enable the pedestrian access door to be closed, thus requiring less comfort heating in the production area.</p> <p>This is a business critical improvement, despite the long payback in terms of energy savings.</p>	2,000 gas	5,000	80	62.5	WYCA Resource Efficiency Fund Commercial loan Funding Circle (loan)

Top 3 Recommended "No or Low Cost" Opportunities

The following recommendations are the priority actions you could take today with no or very low cost implications. You should expect to see payback on these actions within 1 year. **Highlighted in the Detailed Resource Efficiency Audit tables.**

Rank	Recommendations	Annual savings potential						Estimated Capital Cost £	Estimated Savings £ (pa)	Estimated Payback Period (years)	Potential Funding Sources
		Waste saving	Electricity saving	Gas saving	Water saving	Effluent saving	CO ₂ saving				
		T (pa)	kWh (pa)	kWh (pa)	M ³ (pa)	M ³ (pa)	T (pa)				
1	Insulate the office ceiling		3,750				1,545	150	660	0.23	Client Funding
2	Replace the office windows		1,500				0.62	0	264	0	Leeds City Council
3	Install a 2-rate electricity meter						0	0	720	0	Energy Provider

Top 5 Recommended Investment Opportunities

These recommendations will reduce your resource impacts and potentially save you money, but will need a higher level of investment and will take longer to payback. The Resource Efficiency Fund *may* be able to support you with some of these investments. **Highlighted in the Detailed Resource Efficiency Audit tables**

Rank	Recommendations	Annual savings potential						Estimated Capital Cost £	Estimated Savings £ (pa)	Estimated Payback Period (Years)	Potential Funding Sources
		Waste saving	Electricity saving	Gas saving	Water saving	Effluent saving	CO ₂ saving				
		T (pa)	kWh (pa)	kWh (pa)	M ³ (pa)	M ³ (pa)	T (pa)				
1	Install a gas combi boiler and metered mixer tap to replace electric point of use water heaters (production water heating) and electric oil-filled heaters (space heating)		4,000		170		1.68	7,000 + 2,000	2040 (elec) 704 (water)	3.43	Carbon Trust Green Business Fund WYCA Resource Efficiency Fund
2	Install a Climator to improve the efficiency of the warm room		750				0.31	3000	132	22.73	WYCA Resource Efficiency Fund

EXAMPLES OF CAPITAL GRANT PROJECTS

- Specific Project examples:
 - Replacing an aging 37kw air compressor to save £7000 per annum in energy costs, with payback in four years (pre-grant)
 - Investing in a dual waste baler to improve recycling levels and open avenues for additional income by compacting card and polythene waste
 - Replacing an immersion heater with a high efficiency combi boiler and specialist water mixing tap to save £2000 in energy and £700 in water costs per annum, with a five year payback (pre-grant)
- Other 'typical' projects that might be supported:
 - Heating system upgrades
 - Insulation: Building Fabric and pipework
 - Motor replacement (Variable Speed Drives)
 - Staff awareness & behaviour change
 - Lighting: Office and Factory lighting upgrades



IS IT RIGHT FOR YOU?

Does your business:

- Have high utility bills and/or waste disposal costs?
- Need to reduce operating costs or improve efficiency?
- Have outdated and inefficient plant and machinery?
- Find it expensive to heat and/or cool the workplace?
- Have concerns about future energy or material price rises?
- Have concerns about its environmental impacts?
- Need to improve its environmental impact to access supply chain opportunities?

If YES, email businessgrowth@the-lep.com
or call **0113 348 1818** to speak to one of our business advisers.



QUESTIONS

Vincent McCabe
Programme Manager (Resource Efficiency)

<http://www.the-lep.com/for-business/>